



# Kardex Remstar

Company presentation

# Agenda

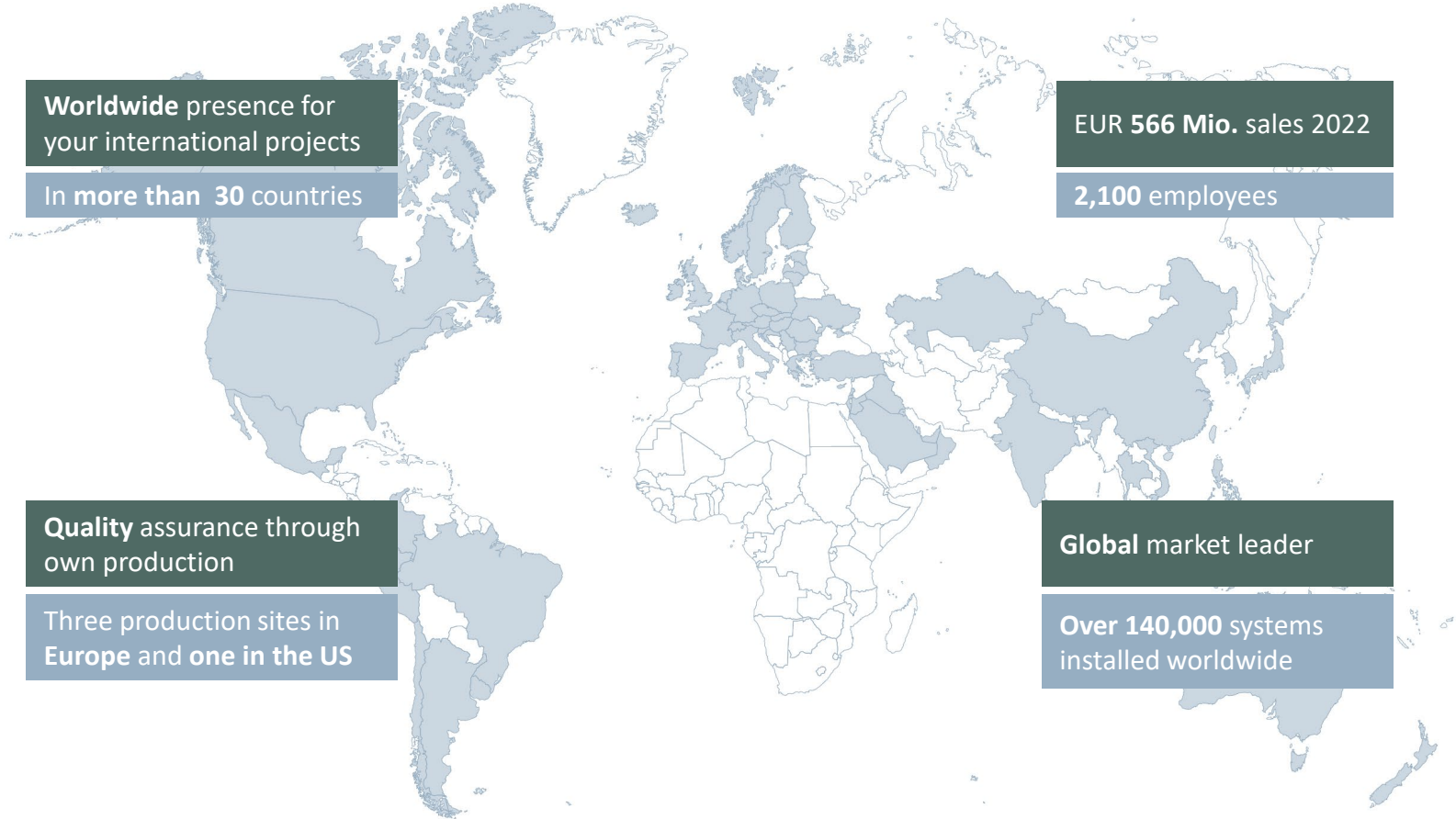
- Introducing Kardex
- Kardex Remstar facts & figures
- Industry solutions
- Product and solution portfolio
- 3<sup>rd</sup> Party technologies
- Life Cycle Service portfolio
- References



Kardex

Intralogistics solutions from a single provider

# Worldwide intralogistics competence



## Leading intralogistics provider - Combined expertise

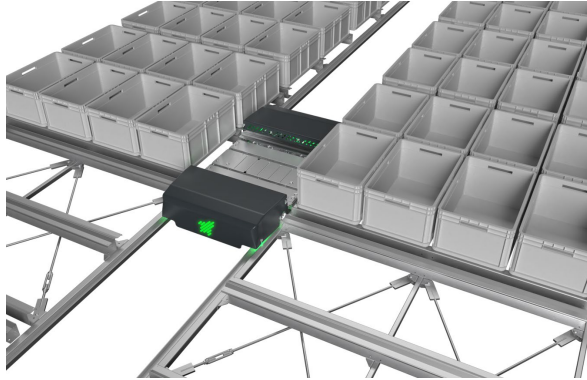


**Kardex Remstar** develops, produces, and maintains dynamic storage and retrieval systems.



**Kardex Mlog** is a leading supplier of integrated material handling systems and high-bay warehouses.

## Acquisitions & shareholdings – 3rd party technologies



**Rocket Solution** develops innovative, standardized and highly space-efficient shuttle systems. These systems consist of high-dynamic storage vehicles that operate within the rack to provide and buffer bins and trays.



**SumoBox** develops and produces modular boxes tailored to Kardex' automated storage and retrieval systems to ensure a maximum use of a system's storage capacity. The boxes are very flexible and fulfill individual customer needs.



As a global **AutoStore** partner, Kardex offers a high-performance and space-saving storage and retrieval solution to rapidly process small parts orders with autonomous robots.

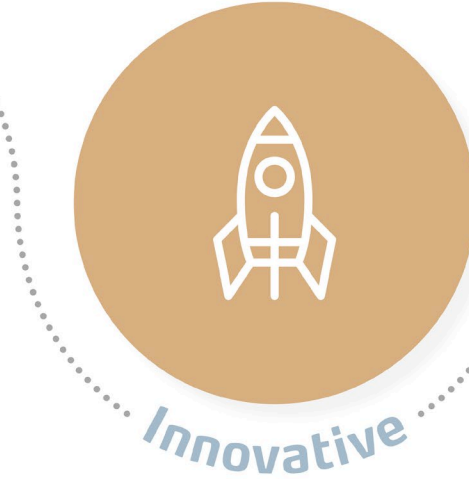
# Our Guiding Principles



# Our Brand Promise



We help our customers and our people in a fast and least complicated way



Our solution portfolio is best-in-class and integrates the latest technologies to meet customer needs



We always treat all our stakeholders equally, honestly, and with utmost respect



## Kardex Remstar Details

Facts, figures and data

# Facts about Kardex Remstar



EUR 437 Mio.  
annual turnover

1,730  
employees

3 productions in Europe and the US  
and 1 software house in Germany

More than  
140,000 installed  
systems

Since  
1873

# Comprehensive intralogistics portfolio

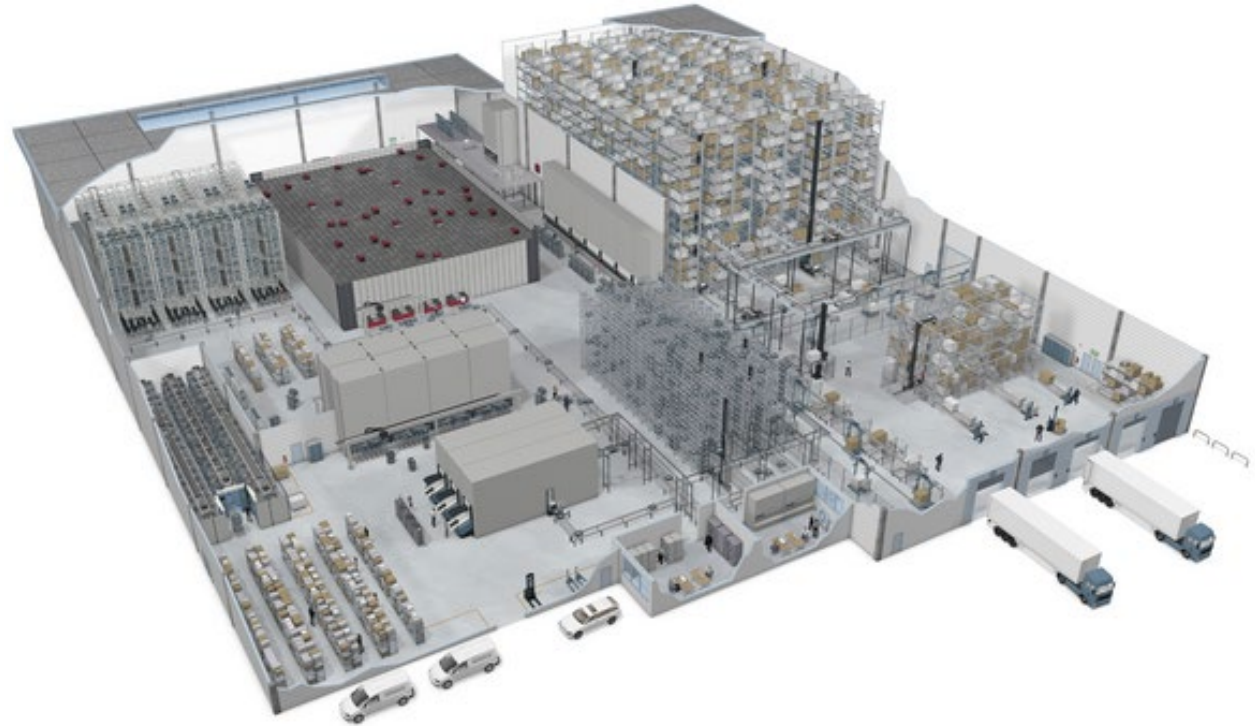
From standardized solutions to individual concepts



New Business



Life Cycle Service



# Company history

**2009**

Launch Vertical Lift Modules Kardex Shuttle 700 & Kardex Power Pick System

**2013**

Launch Vertical Lift Modules Kardex Shuttle 1000 & Kardex Power Pick System 4

**2020**

Redesign Vertical Carousel Module & Shares in Rocket Solution

**2023**

Sumobox becomes member of Kardex

**1957-2006**

Launch and development of Vertical Lift Modules, Vertical Carousel Modules & Software

**2010**

Redesign Vertical Carousel Module

**2015**

Launch Vertical Buffer Module & Kardex acquired shares in Rocket Solution

**2021**

Global partner of AutoStore

# Worldwide competence

## Europe

Austria	Ireland
Belgium	Italy
Cyprus	Netherlands
Czech Republic	Norway
Denmark	Poland
Finland	Romania
France	Spain
Germany	Sweden
Great Britain	Switzerland
Hungary	Turkey
Slovenia	

## America

USA	Colombia
-----	----------

## Asia

Australia	India
China	Singapore
Malaysia	



# Kardex Remstar Quality Solutions

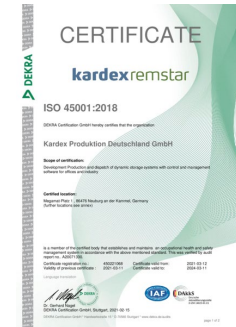
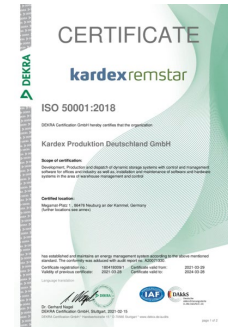
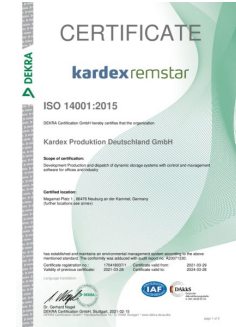
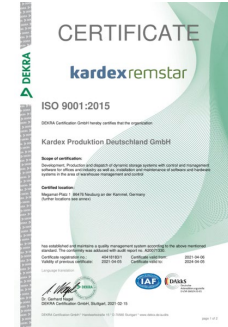
Production & assembly

# Certified quality

Our systems are manufactured to the **highest quality standard** in our factories in Bellheim and Neuburg/Kammel (Germany).

## Product certifications

- ISO 9001 – quality management
- ISO 14001 – environmental management
- ISO 50001 – energy management
- ISO 45001 – occupational management
- RAL German based quality standards
- UL/C tested and approved
- CE conformity

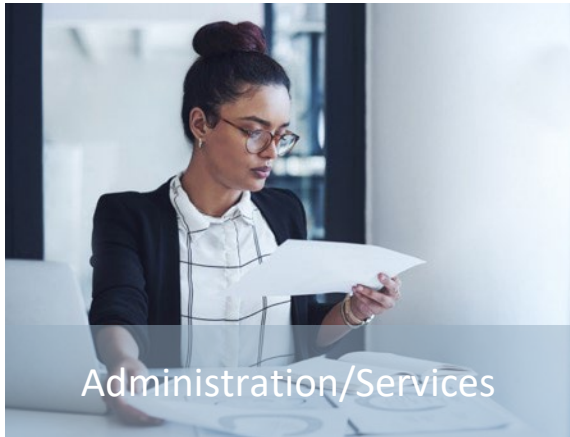


Industry Segments

Easy plug & play



# Industry segments



# Industry segments



## Product Portfolio

Dynamic storage- and retrieval systems

# Our solutions



Vertical Buffer Module



Vertical Carousel Module



Vertical Lift Module



Horizontal Carousel Module



Office Solution



Software & Controls

# Vertical Buffer Module

The Vertical Buffer Module Kardex Compact Buffer is the best solution for fast-growing product ranges with limited storage space.

## Customer needs

- Precise, simple, and fast order picking
- Ergonomically-friendly working conditions
- Flexible with numerous storage possibilities
- Simple integration
- Modular and scalable
- Controlled access



# Benefits at a glance



---

## Vertical Buffer Module

---

- Makes order picking efficient
- 
- Uses pick-to-light systems to create a precise, simple, and fast order picking process
- 
- Eliminates energy recovery times
- 
- Picks quickly, regardless of the unit size
- 
- Combines high storage capacity and the ability to process a wide range of items with fast access times and minimum storage volume per item
- 
- Adapts perfectly to existing processes and building dimensions - it's both modular and scalable
-

# Vertical Carousel Module

The Vertical Carousel Module Kardex Megamat features automated vertical carousels.

## Customer needs

- Fewer picking errors
- More storage capacity in a smaller footprint
- High flexibility and modularity
- Faster and reliable order fulfillment
- Modern design and future-orientated technology
- Reliable intralogistics solutions



# Benefits at a glance



---

## Vertical Carousel Module

---

- High cycle speed – fast access to all stored goods
  - Very high picking productivity and increased picking accuracy
  - Maximum use of space in a minimal footprint
  - Modular system structure enables integration of future technologies
  - Extensive safety features and ergonomic design
  - Intuitive user interfaces and operating concept
-



# Vertical Lift Module

The Vertical Lift Module Kardex Shuttle features automated high-bay storage systems with modular designs.

## Customer needs

- Save space and optimize room height
- Create an ergonomic working environment
- Secure stored goods
- Achieve a high picking accuracy
- Keep systems flexible
- Modular systems



# Benefits at a glance



---

## Vertical Lift Module

---

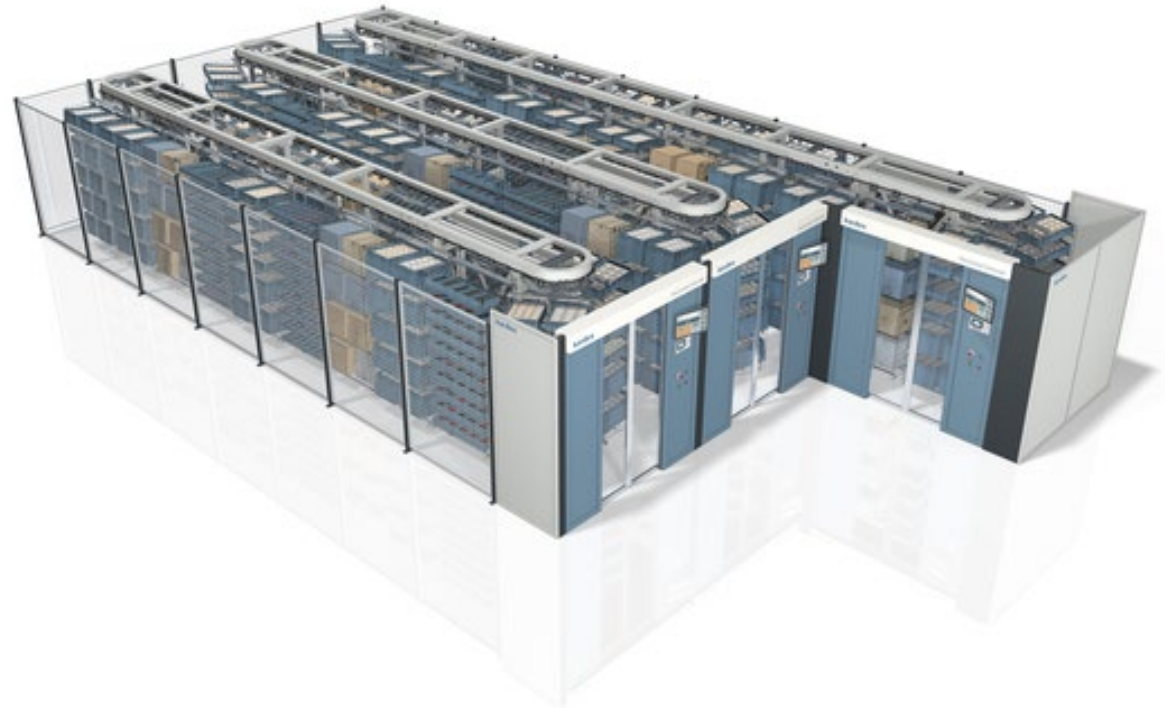
- More storage space in a smaller footprint
  - Fast access times
  - The system shows precise inventory levels
  - Expandable, scalable, and flexible
  - Extremely safe and ergonomic for employees
  - Stored goods stay protected
-

# Horizontal Carousel Module

Use the Kardex Horizontal Carousel Module wherever it is essential to store and retrieve goods quickly, reliably, and cost-effectively.

## Customer needs

- Higher throughput and shorter delivery periods
- Reduced warehousing costs
- Optimized storage space
- Guaranteed permanent access to the goods
- More efficient processes
- Less picking errors



# Benefits at a glance



---

## Horizontal Carousel Module

---

- Batch picking / Paperless picking
- 
- Variability and flexibility
- 
- A reliable and compact design
- 
- Excellent picking performance
- 
- High payloads and optimal space utilization
-

# Office solutions

The Kardex Megamat 115/120 is a software controlled, automated media storage system that holds thousands of media files, videos, CDs, DVDs, or a host of other media.

## Customer needs

- Software-controlled, automated media storage
- Offline or online operation
- Ergonomic work environment
- Access-protected systems
- Controlled access



# Benefits at a glance



---

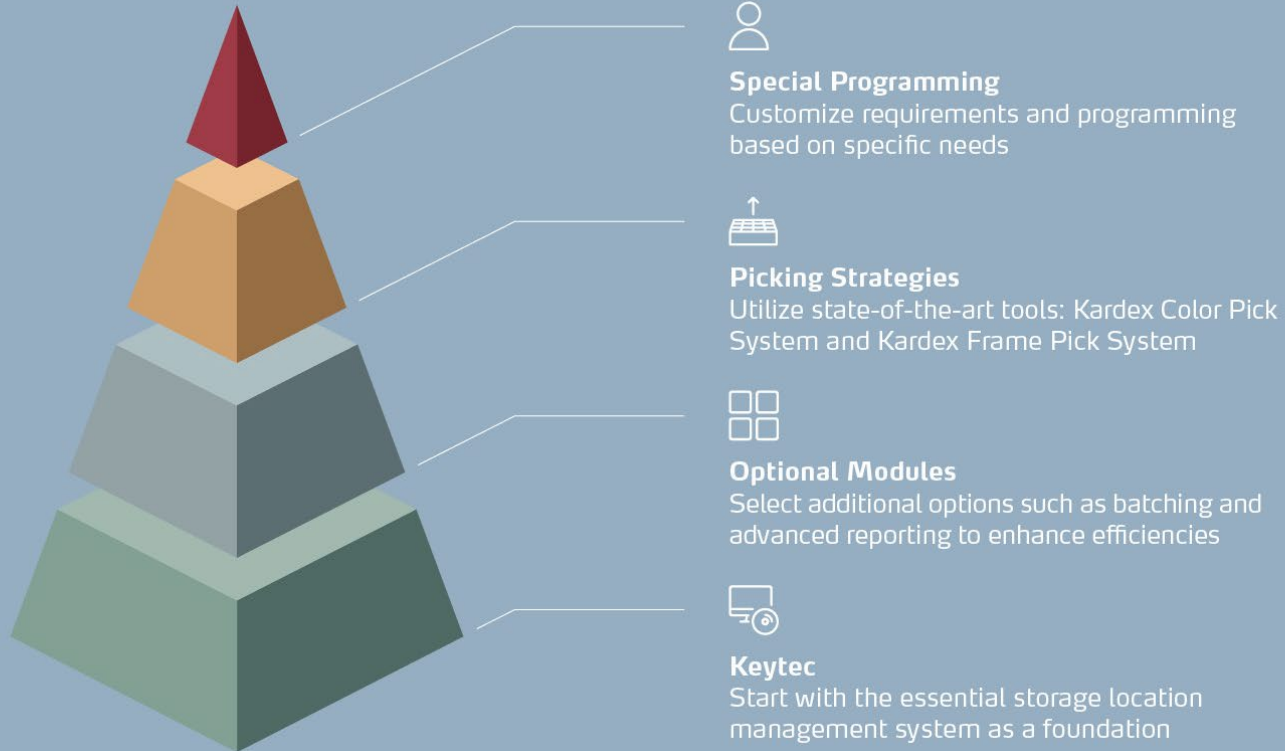
## Kardex Megamat 115/120

---

- Provides an ergonomic work environment
  - Increases productivity
  - Maximizes storage performance
  - Customizes to individual preferences
  - Secures content
-

# Software & controls family

Kardex Power Pick System | Tailored software packages based on professional advice



# Software & controls family

Power Pick Onboard | Intelligent functions – ergonomically designed

- Rotatable and tiltable control panel
- Host interface for order management
- Position signals: LED, Vario, TIC-Matrix, LED-/ Laser pointer
- RFID-Reader for user login





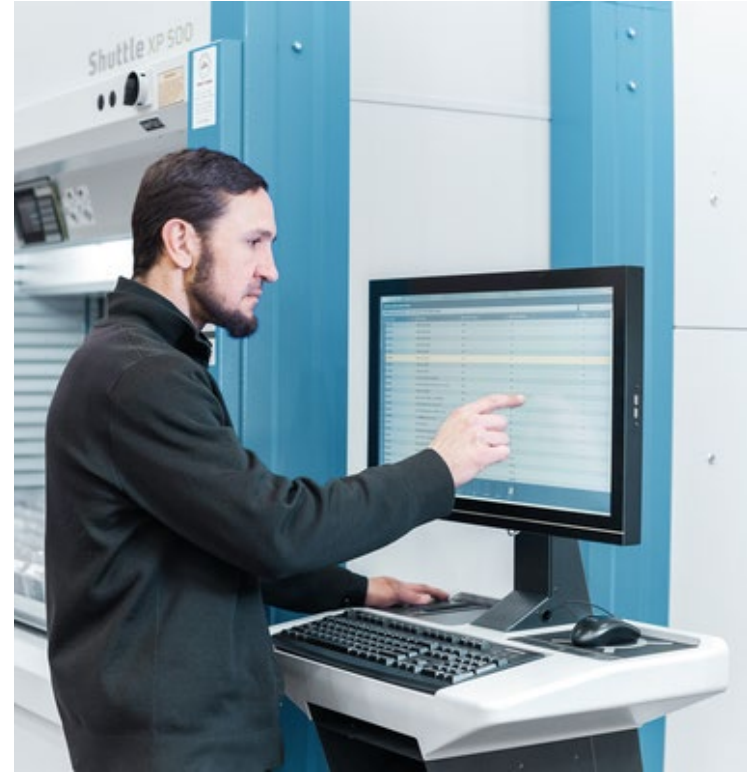
# Integration external management systems

## Kardex Drive Connector

Manages dynamic storage systems directly from SAP®.

### Benefits of Kardex Drive Connector

- Full integration with SAP® WM and EWM
- Seamless integration with existing customer processes
- Control and monitoring in SAP® system



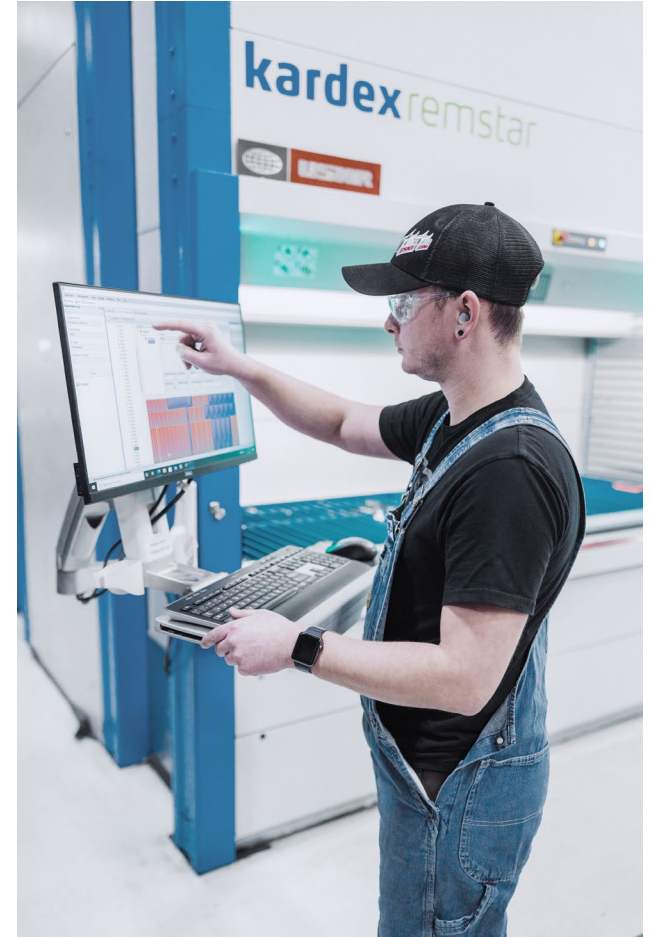
# Integration external management systems

## Kardex JMIF (Java Machine Interface)

Enables communication between dynamic storage systems and external systems.

### Benefits of Kardex JMIF

- Suitable for a wide range of ERP, WMS, material flow and material handling systems
- Various communication protocols available or configurable in the basic version
- Adaptable to any external system through custom development
- Available as embedded service or with process-specific Web UI
- Scalable control of multiple machines without performance loss (multi-threaded)
- Platform-independent through license-free Java® technology



## 3rd Party Technologies

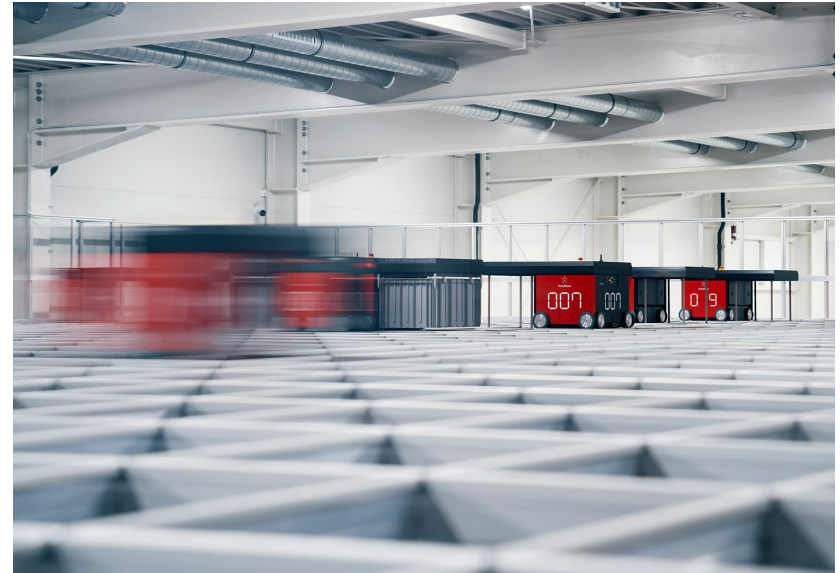
Our partnerships

# AutoStore

As a global AutoStore partner, Kardex offers an automated storage and retrieval system with maximum storage density.

## Customer needs

- High performance / fast order fulfillment
- Additional storage space (due to high number of SKUs)
- Maximum space efficiency
- Scalable processes for fluctuating demand
- Inventory security for high-value merchandise
- Solution for micro fulfillment and fast delivery



# Benefits at a glance



---

## AutoStore

---

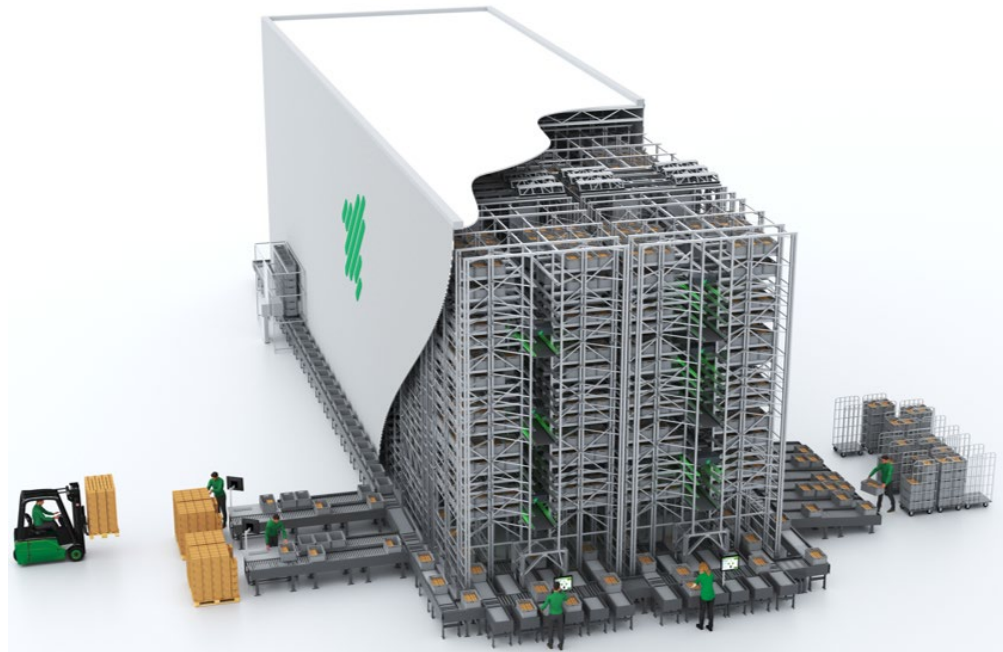
- Fastest order fulfillment system per square foot in the market
- 
- Highest storage density of any AS/RS
- 
- Flexible layout – Build grid in various shapes, around pillars and other static obstacles
- 
- Modular system expandable during full operation
- 
- Global average availability of 99,6 %
- 
- Cost-efficient due to very low energy consumption
-

# Rocket Solution – RSX1 Shuttle System

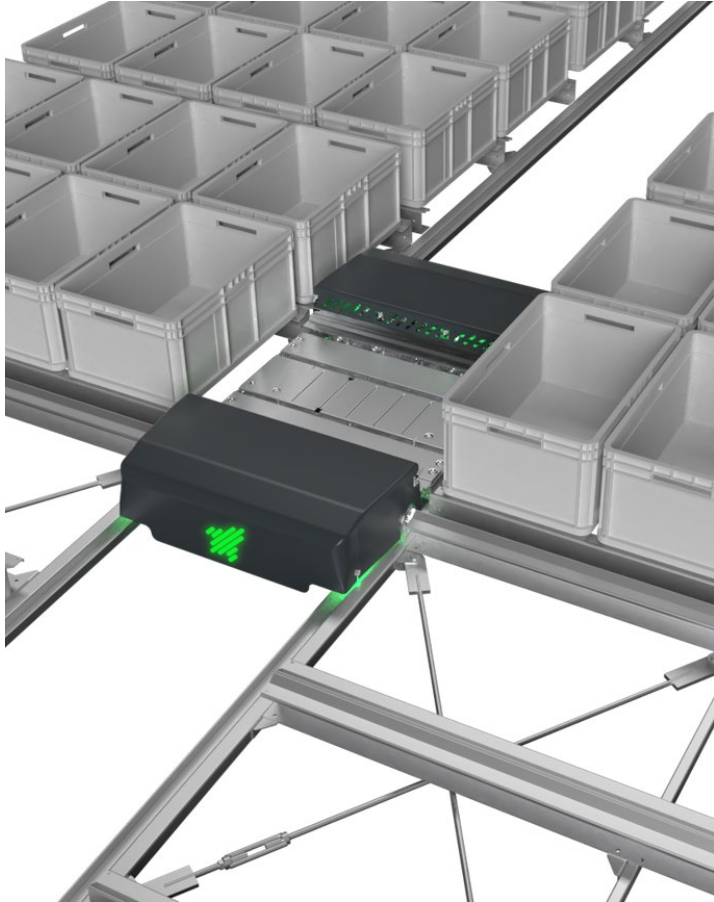
The RSX1 Shuttle System efficiently stores small parts weighing up to 50 kilograms, while optimizing space and costs.

## Customer needs

- High performance picking and buffering
- Low-dynamic or high-volume storage applications
- High space efficiency
- Flexible scalability
- Increased profitability
- Solution for micro fulfillment



# Benefits at a glance



---

## RSX1 Shuttle System

---

- Enables quadruple-deep storage
  - Halving the required space of the shuttle warehouse
  - High-quality and durable materials
  - Low energy consumption
  - Applicable with standard totes and trays of different heights and conditions
  - Scalability due to modular design
-

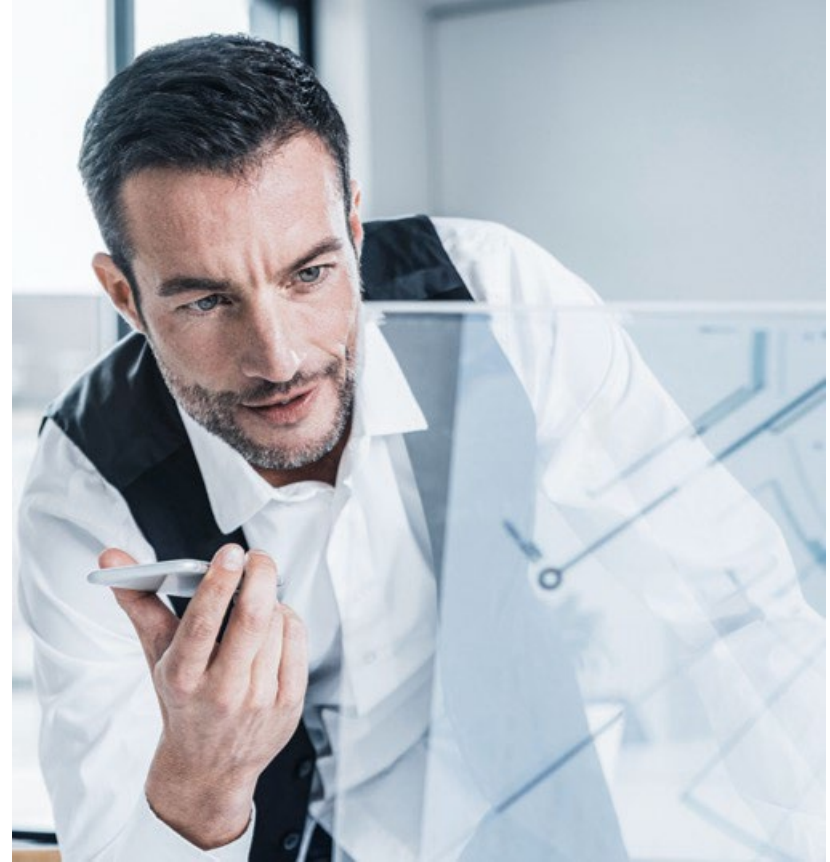
After-Sales Service

Life Cycle Service

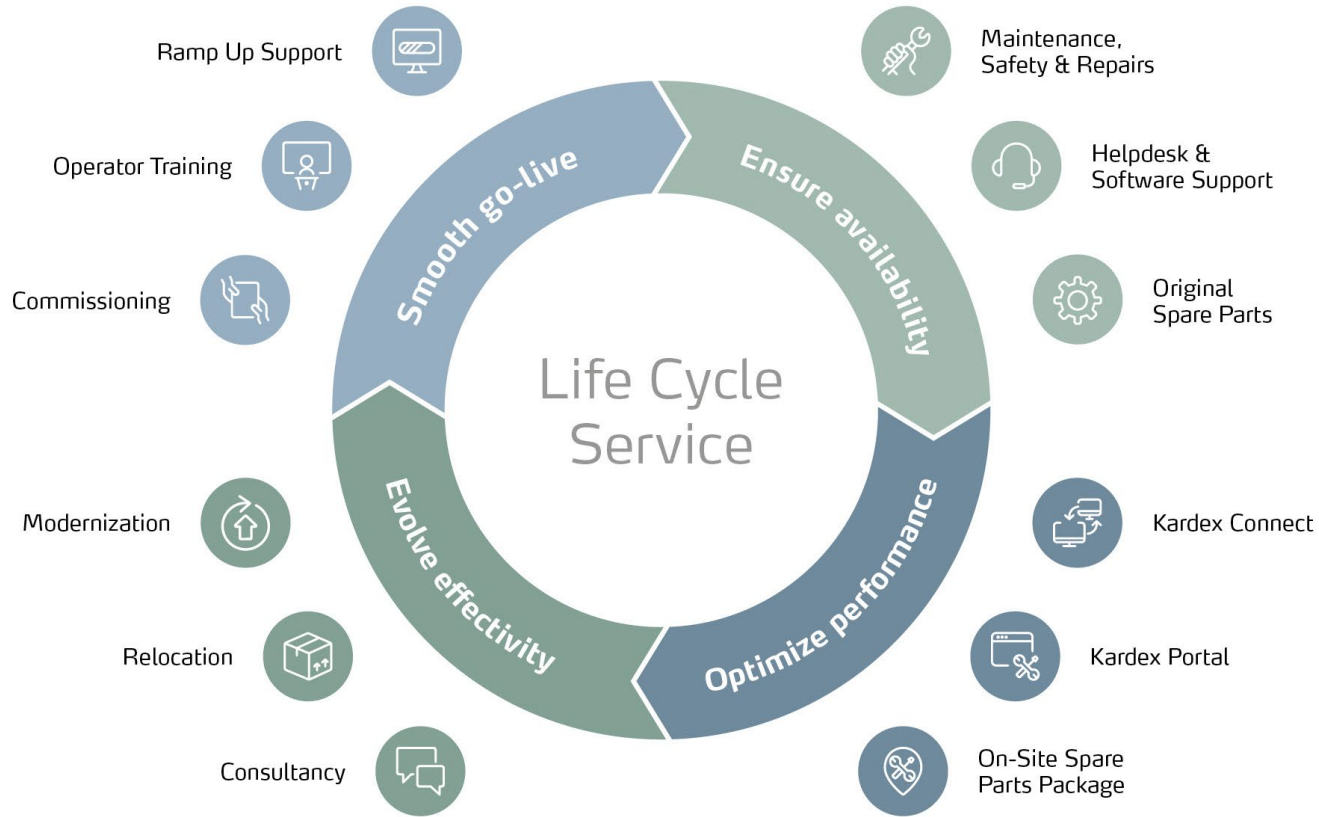


## Life Cycle Service benefits

- Get your new system up and running in the shortest possible time
- Minimize downtime
- Timely repair for your machines
- Software check up by experts
- Speed up repairs by holding spare parts on site
- Customized devices to meet new requirements
- Professional moving of your system
- Systematically develop your existing solution
- Individually combinable services



# Life Cycle Service portfolio



## Service contract portfolio

Kardex  
**BASE**  
Care

"I need reliable and dependable systems."

Kardex  
**FLEX**  
Care

"I need guaranteed rapid response in case of malfunction."

Kardex  
**FULL**  
Care

"I need maximum availability at predictable costs."

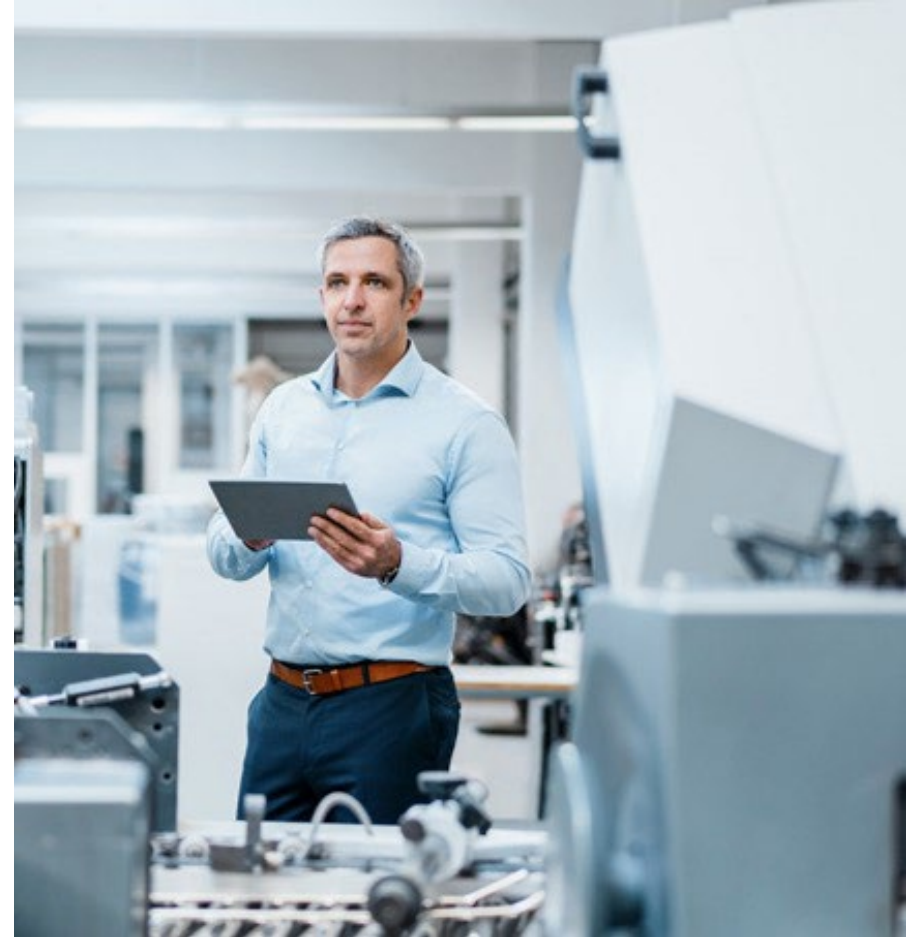
Kardex  
**Software**  
Care

"I need assistance from IT experts to ensure seamless warehouse management processes."

# Extended service

## Options

- Advanced phone service priority-managed with 365/24/7 availability
- Electrical safety test according to EN60204
- Additional preventive maintenance
- Remote diagnostics, monitoring and spare parts packages
- Guaranteed response time for on-site-inserts
- Remote Assistance & Analytics



# Kardex Connect



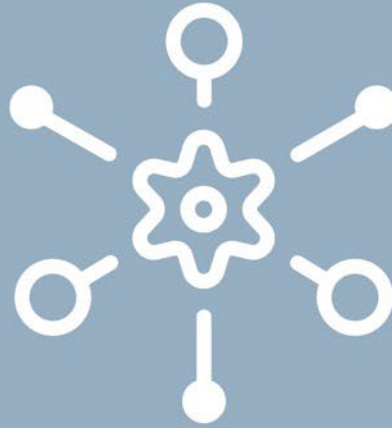
## Remote Support

Remote Maintenance and Remote Diagnosis of Kardex machines and software with cutting edge security.



## Analytics

Visualize KPIs across your warehouse to improve its effectiveness.



## Assistance & Conferencing

Use the Assist & Conferencing app to enable a technician's eyes and ears on-site during a remote maintenance.



## Smart Monitoring

Monitoring of alerts and warnings, smart processing within the customer's network, for a higher security and peace of mind.

# Kardex Connect

## Advantages at a glance

- Fewer breakdowns
- Minimal downtime costs
- Maximum security
- Greater reliability
- Early fault detection



## Our promise

- Secure data storage in Germany
- Only unit and hardware information transfers – personal data remains personal
- Two-factor authentication using independent certificates increases protection against unauthorized access
- Remote access to your unit is only possible after an outgoing connection service request is created



# Kardex Customer Service experiences

“Thanks to the Kardex Remstar Life Cycle Service, we can **quickly ensure the delivery** of our Schindler **spare parts** even in the event of a malfunction of the Kardex Shuttle XP.”

M. L., Warehouse Manager at Schindler AG

“We chose the option of an **all-inclusive package** for the installation of our devices with automation technology and robot connection.”

A. J., Head of Development Grinding Technology at KAMAX Tools & Equipment GmbH & Co. KG

“Agreed **appointments are adhered to**; in the event of faults, **expert technicians** are always on site.”

R. K., Head of Logistics at ebm-papst Zeitlauf GmbH & Co.KG

The **experts** running the hotline are **very knowledgeable** and can solve many issues on the phone, which is **quick and efficient.**”

J. L., Factory Director at Budweg Caliper A/S

References

Customer projects



# Our customer references



For more information **contact us** or visit our website **[www.kardex.com](http://www.kardex.com)**

Thank you for your attention

For questions we are available for you – contact us!